

# THE BEST YET

With the latest showhome by Brian Gluckstein poised to welcome a record-breaking number of visitors, the designer proves he knows how to wow a crowd.



A library table divides the living room's two seating areas, while an area rug ties the spaces together. Brian updated the traditional mirror above the fireplace by painting it the same green-grey colour as the walls. **Design,** Brian Gluckstein, Gluckstein Design Planning; **ottoman, chaises,** GlucksteinHome; **library table, bench,** Gluckstein Design Planning; **rug,** Elte; **artwork** by Lindsay Chambers, Art Interiors; **wall and trim colour,** Gray Mirage (2142-50), Benjamin Moore.

Text by SAMANTHA EDWARDS | Photography by ANGUS FERGUSSON



The “wow factor” in the living room comes from the large-scale photographic mural of the Château de Versailles by photographer Tony Koukos. **Sofa, armchairs, coffee tables, round side table, table lamps**, GlucksteinHome; **custom mural** by Tony Koukos; **light throw pillows**, Bilbrough & Co.; **dark throw pillows**, Elte.

**BELOW:** “From the outside, it looks like a traditional house but, inside, there’s a contrast between traditional and modern,” says Brian. “It makes it more soulful.” **Architectural design**, Richard Wengle Architect; **construction**, PCM Project & Construction Management.



**B**rimming with elegant details and luxe amenities, the Princess Margaret Cancer Centre Home Lottery Showhomes are never your average abodes (past highlights include spacious courtyards, yoga rooms and stately two-storey libraries). This year’s house is no exception. Set on a corner lot in a leafy neighbourhood in Oakville, Ont., the 7,050-square-foot showhome boasts floor-to-ceiling windows overlooking manicured gardens, an airy kitchen with a sunny window seat and an intimate dining room ideal for family suppers or cocktail soirées. Even though this is Brian Gluckstein’s sixth time designing the Princess Margaret Showhome, he still pulls out some surprises: a wall-to-wall mural of the Château de Versailles in the living room, a putting green in the backyard and two 10-pin bowling lanes on the lower level, to name a few.

Designed by Toronto architect Richard Wengle, the four-bedroom house was inspired by a 1920s estate Brian spotted during a trip to Long Island, N.Y. “It was the perfect inspiration because the front façade was pushed back in the middle. I didn’t want the front door of the showhome to be right at the curb,” says Brian. He planned the layout to give nearly every room a lush garden view. Throughout, he paired traditional features like wall panelling and drapery with modern elements such as sculptural light fixtures, mid-century modern-style furniture and minimalist fireplaces.

Though the house is well-appointed, it’s also hardy. “This house gets more traffic than most,” says Brian with a laugh. Hardworking materials like scrubbable wallpapers and stain-resistant quartz countertops were chosen to withstand the 70,000 visitors who will flow through the house, as well as future homeowners with kids. “I’m always thinking about how someone is going to actually *live* here afterward,” says Brian. “It’s really a house the whole family will enjoy.”

Toronto designer Brian Gluckstein in the showhome’s two-storey hallway. Its height makes the house feel wider and brighter. Olive-hued velvet drapery matches the living room chairs. **Drapery** (throughout), Cortina Curtains & Shades.

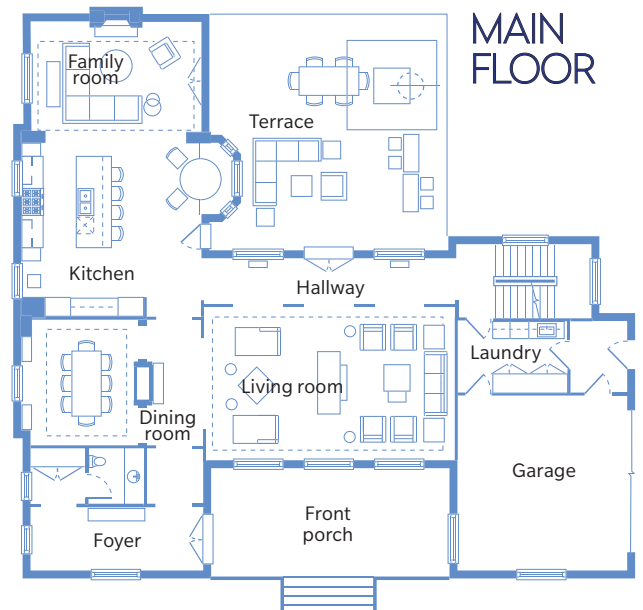


"I LOVE BIG ISLANDS BECAUSE THAT'S WHERE EVERYONE LIKES TO CONGREGATE IN THE KITCHEN. THE MORE SEATING YOU HAVE AROUND IT, THE BETTER"

Brian painted the kitchen cabinetry a grey-blue hue framed in gunmetal black for a modern-industrial look. The man-made quartz countertop continues up the backsplash and behind the uppers, which lightens the space. **Cabinetry**, PM Fine Cabinetry; **pendant**, The Urban Electric Co.; **countertop, backsplash**, Cosentino; **sink, faucet**, American Standard; **stools**, GlucksteinHome; **range, vent hood**, Jenn-Air.



**LEFT:** Always a proponent of flexibility, Brian designed the dining room to also work as a library by adding floor-to-ceiling bookcases. The modern, gold leaf-covered chandelier brings out the brass accents in the mahogany table. **Wallpaper**, Metro Wallcoverings; **rug**, Elte; **dining table, dining chairs**, GlucksteinHome; **chandelier**, Universal Lamp; **drapery fabric**, Designers Gallery.



Floor plan illustration by Shelley Frayer



“Everyone loves a window seat,” says Brian of the kitchen’s dining area. “Imagine reading the paper or having your breakfast here. It’s a great place to sit and look out at the garden.” **Pendant, Universal Lamp; banquette cushion, throw pillows, Gluckstein Design Planning; table, chairs, GlucksteinHome.** **LEFT:** The kitchen flows into the open family room, creating a casual gathering and entertaining zone.



**LEFT:** To differentiate the family room from the kitchen, Brian panelled the ceiling and covered the floor with an area rug. “Subtly changing the architecture keeps open spaces visually connected while still feeling like you’re in separate rooms.” **Wallpaper, Metro Wallcoverings; fireplace surround, Cosentino; drapery fabric, Joanne Fabrics; rug, Elte; sofa, side table, chair, artwork, GlucksteinHome; light fixture, Universal Lamp.**



The pale stucco exterior and dark trim were inspired by a 1920s estate in Long Island, N.Y.

“PEOPLE TEND TO FORGET ABOUT FINE DETAILS. ADDING THOSE LAYERS MAKES A ROOM UNFOLD THE LONGER YOU’RE IN IT. THAT’S WHAT GIVES A ROOM PERSONALITY”



In the principal bedroom, blush-coloured walls and a dramatic tufted headboard create an overall feeling of softness, while blue-grey bed linens add freshness. **Drapery fabric**, Designers Gallery; **rug**, Elte; **bed, linens, bedside tables**, GlucksteinHome; **armchair, ottoman**, McGuire; **chandelier, pendants**, Universal Lamp; **wall colour**, Ice Breaker (CC-428), Benjamin Moore.

## WONDER WALLS

How Brian takes walls from plain to pretty.



### STATEMENT MURAL

“The biggest mistake people make is to pick timid art. In big rooms, be bold. Go for large-scale art — don’t be afraid.”



### MOD MOULDINGS

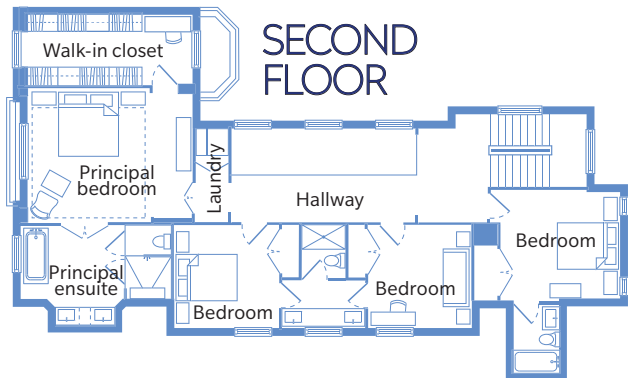
“You can do panelling and crown moulding in a modern way by painting them the same colour as the walls.”



### CHIC WALLPAPER

“I love wallpaper that adds warmth. It can give depth to a room that you just can’t get from straight paint.”

**RIGHT:** With its French daybed, shag rug and knitted ottoman, this eclectic bedroom mixes styles and periods effortlessly. “The painted faux panels add some humour. I wanted to show people you can have fun while being traditional,” says Brian. **Daybed**, Black Rooster Decor; **rug**, Elte; **wall and trim colour**, Silver Satin (OC-26), Benjamin Moore; **faux panel painting**, Cristina Pepe.



Floral Missoni wallpaper in the principal ensuite looks like embroidery, but it's actually vinyl. The sleek soaker tub is a modern counterpoint to the classic glass beehive light fixture. **Wallpaper**, Metro Wallcoverings; **tub, fixtures**, DXV; **flooring**, Cosentino; **pendant**, Universal Lamp; **artwork** by Anna Church, Art Interiors; **towels, bath accessories**, GlucksteinHome.



**ABOVE:** Missoni's classic multicoloured striped wall covering adds tons of personality in this small bathroom, which is shared by two bedrooms. **Wallpaper**, Metro Wallcoverings; **hardware**, Richelieu; **countertop, backsplash**, Cosentino; **sink, faucet**, DXV; **floor tile**, Stone Tile.

Floor plan illustration by Shelley Frayer