

# WINNING WAYS

Designer Brian Gluckstein outdoes himself with a must-see showhome that holds the promise of life well lived.

*Architecture by* **RICHARD WENGLE ARCHITECT** | *Design by* **BRIAN GLUCKSTEIN**  
*Text by* **GRACE TOBY** | *Photography by* **ANGUS FERGUSSON**



Low-set wainscoting and full-length drapery emphasize the great room's lofty ceiling. "I like high ceilings and love to incorporate at least one in every design," says Brian. High-contrast trim on the off-white coffee tables and armchairs evokes the signature piping of a timeless Chanel jacket. **Sofa**, GlucksteinHome; **armchairs, cube tables, throw pillows, art** (right), Gluckstein Design Planning; **drapery fabric**, Threadcount Textile & Design; **rug**, Elte; **photographic art** (left) by Tony Koukos; **wall and trim colour**, Distant Gray (OC-68), **ceiling colour** (throughout), Decorator's White (CC-20), Benjamin Moore.



L

ike the glamorous lead in a classic Hollywood film, this year's Princess Margaret Cancer Centre Home Lottery Showhome makes an alluring first impression: it greets you in a dramatic fashion

and dazzles you with gorgeous looks, but is careful not to give away too much, too fast. From the extra-tall foyer just inside the front door, a tiger-print rug worthy of Lana Turner can be glimpsed in the home office across the hallway. "It's similar to a carpet I had in my New York City apartment years ago," says designer Brian Gluckstein. The scene beckons visitors forward until the 6,700-square-foot home's elegant main floor is revealed through a procession of grey-trimmed archways. "The house is quite open, but I didn't want you to see everything as soon as you walk in," says Brian. In design, as in the movies, a little mystery goes a long way.

Set on a corner lot in a leafy neighbourhood of south Oakville, Ont., the five-bedroom, two-storey house is loosely inspired by French Normandy style. In less than eight months, Brian expertly tempered the interior's open layout by creating defined living spaces with purpose. He pulled in some walls (to create a centre courtyard) and pushed out others (the great room is generously sized and self-contained), varied ceiling heights and balanced bright, lofty spaces with cosy, moodier rooms. Nearly every surface received its own treatment, from washable murals in the kitchen to a grey wall covering on the dining room ceiling to graphic floor tiles in the foyer. Grey-washed white oak floors with a scraped finish quietly tie together the showstopping elements.

**TOP RIGHT:** For the home's French Normandy-inspired exterior, architect Richard Wengle chose an aged brick that looks like lime has seeped through over time. **Construction**, PCM Project and Construction Management; **landscape architecture**, Strybos Barron King Landscape Architecture.



Produced by Sally Armstrong/Floor plan illustrations by Mojan Javid



EVERYONE WILL BE TALKING ABOUT

**The tiger-print rug**

"It adds whimsy and drama, and brings in the black that's the accent colour in the space. I wanted that wow factor," says Brian.



**ABOVE:** A square table replaces the usual desk, making this home office a multipurpose space that works for the entire family. "The kids can do homework at the table while parents sit and work on the daybed with a laptop," says Brian. **Wall covering,** Crown Surface Solutions; **pendant,** Universal Lighting; **drapery fabric,** JF Fabrics; **rug,** Elte; **table,** Cocoon Furnishings; **vase,** Hopson Grace; **custom chaise, art,** Gluckstein Design Planning; **trim colour,** Silver Satin (OC-26), Benjamin Moore. **TOP LEFT:** Toronto designer Brian Gluckstein stands in the great room of the seventh Grand Prize Showhome he's designed for the Princess Margaret Cancer Centre Home Lottery. **Console,** Sunpan. **BOTTOM LEFT:** "The two-storey foyer gives the entrance a sense of drama," says Brian. "The real showstopper is the patterned floor, which we created to achieve a strong, graphic look." **Floor tile,** Cosentino; **bench,** GlucksteinHome; **photographic art,** PI Fine Art; **ceiling fixture,** Universal Lighting; **wall and trim colour,** Silver Satin (OC-26), Benjamin Moore.



## EVERYONE WILL BE TALKING ABOUT

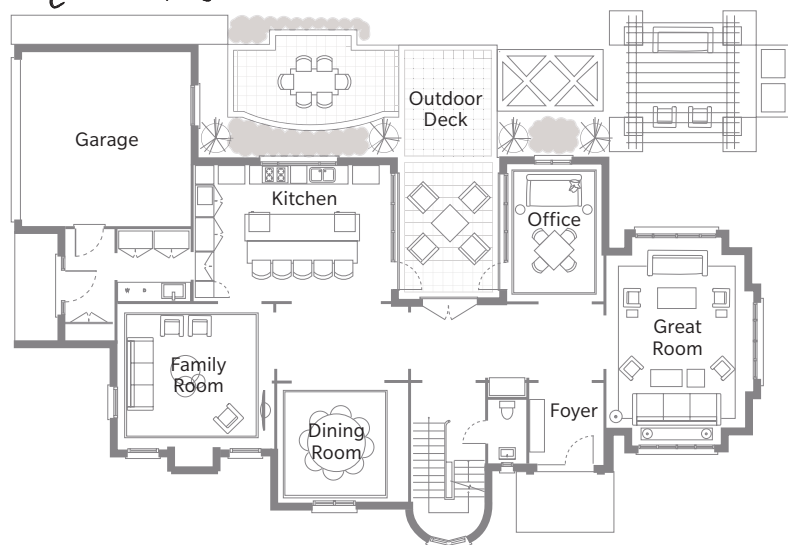
### The bookcase murals

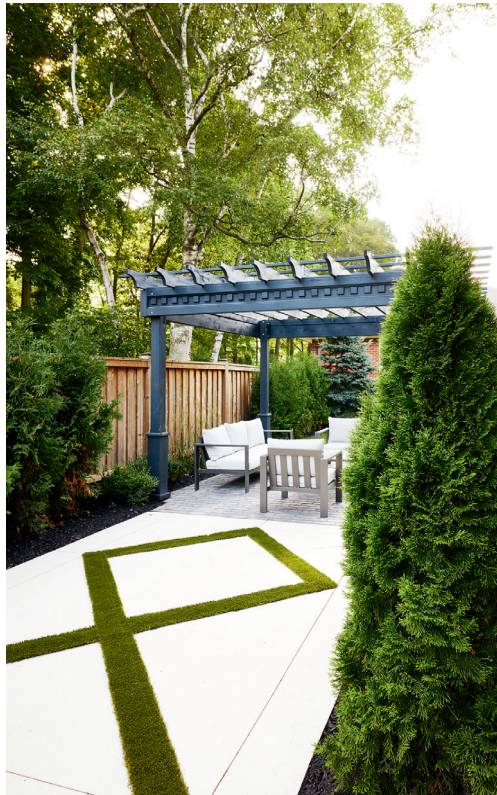
“I wanted to bring art into the kitchen,” says Brian. “Instead of using plain panels to cover the refrigerator and freezer columns, we worked with Tony Koukos on a pair of murals and had them applied to the façades.”

**ABOVE AND RIGHT:** “The showhome has the most storage we’ve done in a kitchen, but it’s discreet,” says Brian. Some of the appliances, including the Jenn-Air wall oven and microwave oven drawer, are incorporated into the island. The kitchen’s bookshelf murals add an unexpected element in the sleek space. *Custom cabinets, dining table, PM Fine Cabinetry; countertops, backsplash, Cosentino; hardwood flooring (throughout), Vintage Hardwood Flooring; faucet, Grohe; pendants, sconces, Universal Lighting; chairs, Elte Mkt; wall murals by Tony Koukos; white bowl, tea towel, wooden bowl, cutting board (all on island), white pitcher (on back countertop), Hopson Grace; wall covering, Primavera.*



## Main Floor





EVERYONE WILL BE TALKING ABOUT

**The arched windows**

“They add a classical element to the interiors that’s in keeping with the French Normandy style of the architecture,” says Brian.



**ABOVE:** Extending the family room’s corner windows to the floor and topping them with elegant arched transoms has a custom look and connects the mint-coloured room to the outdoors. A striped rug underscores the casual mood. **Sofa, coffee table, end table, accent chair, accent tables, table lamp,** GlucksteinHome; **rug,** Elte; **drapery fabric,** Threadcount Textile & Design; **photographic art,** Art Interiors; **easel,** Gluckstein Design Planning; **wall covering,** Metro Wallcoverings; **trim colour,** Asphalt (CC-548), Benjamin Moore. **TOP LEFT:** An eye-catching artificial turf inlay leads to the garden’s pergola-covered lounge area. **Outdoor furniture,** GlucksteinHome; **Synlawn artificial turf inlay,** Garden City Groundskeeping Services; **pergola construction,** Limestone Trail; **landscape construction and installation,** Tekk Construction Group.

**BOTTOM LEFT:** A Venetian plaster finish on the dining room walls delivers depth and texture while a grey wall covering on the ceiling gives the space a cosy feel. **Custom dining table,** Gluckstein Design Planning with Estate Interiors; **dining chairs,** GlucksteinHome; **chandelier,** Elte; **plaster wall finish** by Cristina Pepe; **wall covering (on ceiling),** Woeller; **drapery fabric,** JF Fabrics; **trim colour,** Silver Satin (OC-26), Benjamin Moore.



**ABOVE:** In the principal bedroom, a shallow alcove behind the bed and the vaulted ceiling create an environment that's both grand and intimate. **Bed, bed linens, nightstands, GlucksteinHome; ceiling fixture, Universal Lighting; rug, Elite; art (left), Art Interiors; wall and trim colour, Silver Lining (2119-60), Benjamin Moore.**

**RIGHT:** Subtle texture and strategic doses of shine in the principal ensuite keep the look simple yet sophisticated. **Custom cabinets, PM Fine Cabinetry; hardware, Richelieu; sinks, faucets, DXV; countertop, floor tile, Cosentino; sconces, Universal Lighting; accessories, GlucksteinHome.**

The cumulative effect of these many thoughtful moments is at once modern and traditional, open and inviting. The home's easy flow, plush conversation zones and dream kitchen make it ideal for gatherings and entertaining — a good thing, since the house will soon welcome more than 70,000 visitors. This is Brian's seventh showhome, and he remains committed to providing the imminent crowd and, ultimately, the lucky winner, with lots of fresh inspiration. "I want people to leave with ideas they can replicate at home," he says.

There's also plenty to simply fantasize about. One of this year's drool-worthy spaces is found on the lower level: the wellness spa is kitted out with a side-by-side dry sauna and wet steam room, a DXV tub with a waterfall feature, a massage room and a spinning studio, all enclosed by terry cloth drapery and glass doors. Taking a seat in the steam room looking out at the spa, Brian says, "This is my favourite space. It's what I want in my basement — and everyone who comes down here says they want one, too." Already planning next year's showhome, Brian wonders aloud how he'll top this.

## EVERYONE WILL BE TALKING ABOUT

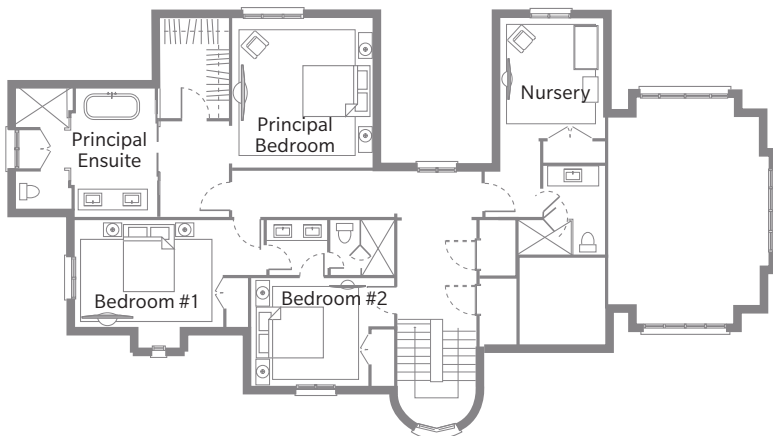
### The bathroom floor tile

"It's a graphic focal point," says Brian.

"To create the look, large-scale slabs were cut and arranged in this pattern, but the technique can be replicated by cutting down less expensive 12- by 12-inch tiles in different colours."



## Second Floor

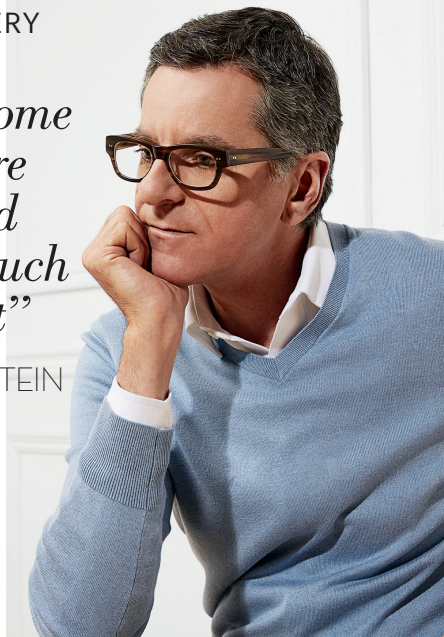


# BEST OF THE BEST

DISCOVER **6 WAYS** YOUR LIFE WILL CHANGE AFTER WINNING PRINCESS MARGARET HOME LOTTERY'S \$6 MILLION GRAND PRIZE, INCLUDING THE OAKVILLE SHOWHOME!

*“The showhome sight lines are stunning and there is so much natural light”*

— BRIAN GLUCKSTEIN



## 1 YOU'LL GO TO THE SPA EVERYDAY — AT HOME!

“We decided to create a retreat within the house,” says Brian. “Whether you want a steam, sauna, massage or spin class, it’s all on the lower level.” **Design**, Brian Gluckstein, Gluckstein Design Planning; **Dekton Opera flooring, countertop, shower walls**, Cosentino; **Keshi wall covering**, Designtex; **drapery**, Threadcount Textile & Design; **cabinets**, PM Fine Cabinetry; **pendant**, Universal Lighting; **sink, faucet, tub, tub filler**, DXV.

TOUR THE SHOWHOME WITH BRIAN ON H&H TV

Watch videos at [houseandhome.com/pmhl](http://houseandhome.com/pmhl)

## 2 SUMMERTIME LIVING WILL BE EASY.

Lush landscaping and fully furnished backyard “rooms” make entertaining a breeze, whether it’s brunch and mimosas or evening cocktails with friends. **Landscape architecture**, Strybos Barron King Landscape Architecture; **landscape construction and installation**, Tekk Construction Group.





### 3 YOU'LL BE SITTING PRETTY.

All of the gorgeous furniture, accessories, wallpaper and paint in the 6,700-square-foot showhome have been handpicked by Brian Gluckstein and are yours to keep! **Hardwood flooring**, Vintage Hardwood Flooring; **drapery**, Threadcount Textile & Design; **rug**, Elte; **sofa, chair, coffee table, side table**, GlucksteinHome; **custom throw pillows and art**, Gluckstein Design Planning; **wall and trim colour**, Distant Gray (OC-68), Benjamin Moore.



### 4 GOURMET MEALS WILL BE THE NORM.

Indulge your inner chef with the kitchen's Jenn-Air 36-inch induction downdraft cooktop, which offers the cooking power of gas without the need for overhead ventilation. "I love the sleek and striking design of the showhome appliances!" says Brian.



### 5 YOU'LL TAKE A LUXURIOUS, EXTENDED ROAD TRIP.

After all, the grand prize includes \$1 Million Cash and a 2020 Range Rover, so cost is no object!

### 6 YOU'LL FEEL GREAT ABOUT SUPPORTING PRINCESS MARGARET CANCER CENTRE.

With nearly one in two Canadians expected to be diagnosed with cancer, funds raised from the lottery support The Princess Margaret and its team of world-leading researchers and clinicians who are making the impossible possible. "We love using design to raise funds for such an important institution," says Brian.

Photography by Angus Fergusson (showhome)/Styling by Sally Armstrong

PRINCESS MARGARET  
**HOME  
LOTTERY**  
TO CONQUER CANCER™

Lot. Lic. #10873

VISIT **PRINCESSMARGARETLOTTO.COM**  
FOR TICKETS AND A FULL LIST OF  
ALL THE INCREDIBLE PRIZES!



# \$6 MILLION GRAND PRIZE



OPENS  
FRIDAY,  
AUGUST 30

Oakville Showhome + Range Rover + \$1 Million Cash



\$2.5 MILLION  
UPPER BEACHES  
GRAND PRIZE

Upper Beaches  
Showhome + \$105,000  
Cash



OUR WORLD-FAMOUS  
\$1.3 MILLION  
EARLY BIRD PRIZE

Muskoka Lakefront  
Cottage + \$50,000  
Cash

  
PRINCESS MARGARET  
**HOME  
LOTTERY**<sup>™</sup>  
TO CONQUER CANCER

## ONE BIG PRIZE AFTER ANOTHER

Get your ticket today!

PrincessMargaretLotto.com • 416.650.7888 • 1.866.631.1234

FOR SHOWHOME VISITING HOURS, MAP, PRIZES, & TICKETS,  
VISIT PRINCESSMARGARETLOTTO.COM. HOME LOT. LIC. 10873