

LUCKY CHARMER

Architecture by RICHARD WENGLE ARCHITECT | Design by BRIAN GLUCKSTEIN
Text by EMILY EVANS | Photography by MICHAEL GRAYDON and NIKOLE HERRIOTT

Designer Brian Gluckstein's grand-prize showhome is the hottest ticket in town.



Produced by Stacy Beggs / Floor plan illustrations by Madison Pflance

RIGHT: The professionally landscaped backyard has multiple entertaining areas and a mix of greenery. **Outdoor furniture,** GlucksteinHome; **exterior sconces,** Universal Lighting.

BOTTOM: The family room's expansive windows look onto the backyard. **Fireplace hearth and surround,** Cosentino; **sofa, coffee tables,** GlucksteinHome; **armchairs,** Cocoon Furnishings; **custom chaise,** Gluckstein Design Planning; **rug,** Elte.

OPPOSITE: Impressive plasterwork makes a grand impression from floor to ceiling in the front foyer. The all-navy dining room beyond has a calm, moody feel. **Chandelier,** Cornerstone Home Interiors; **wall covering,** Odyssey Wallcoverings; **dining table,** Gluckstein Design Planning with Estate Interiors; **dining chairs,** Gluckstein Design Planning; **rug,** Elte; **Dekton floor tile (in foyer),** Cosentino; **foyer wall and trim colour,** Pale Oak (OC-20), **cased opening colour,** Kendall Charcoal (HC-166), **dining room trim colour,** Blue Note (2129-30), Benjamin Moore.



You hardly need to turn on the lights in this house,” says Brian Gluckstein from the sunlit, two-storey foyer of this year’s Princess Margaret Cancer Centre Home Lottery Showhome in swanky south Oakville, Ont. Although he’s quite right, it’s hard to resist flicking on any of the impressive fixtures dotted around the house like jewelry. It’s Brian’s eighth time spearheading the design of the grand-prize abode and his passion hasn’t waned one bit — fair enough when you’re building a one-of-a-kind turnkey home from the ground up that has enviable amenities such as a chef’s kitchen, fitness centre and home theatre.

Over the years, the Gluckstein Design Planning team has worked within different architectural styles for the showhomes, including a Hamptons-style hideaway, a French-inspired chateau and, this year, a 7,500-square-foot modern dwelling bejewelled with Art Deco flourishes. “The Deco influence is subtle, but it’s the foundation of our design,” says Brian of the five-bedroom, four-and-a-half-bath manor. A little restraint pays off when you’re playing the long game. “We want to design showhomes that are going to age well,” says Brian, who’s lived in his own home for more than 20 years and still loves it just as much today as he did two decades ago.

EVERYONE WILL BE TALKING ABOUT

THE SOARING FAMILY ROOM

“I like sweeping sight lines both horizontally and vertically, so we made the family room two storeys high with juliet balconies above,” says Brian. “This is the hub of the home and everything else radiates off of it.”

EVERYONE WILL BE TALKING ABOUT

THE TRAVERTINE ISLAND

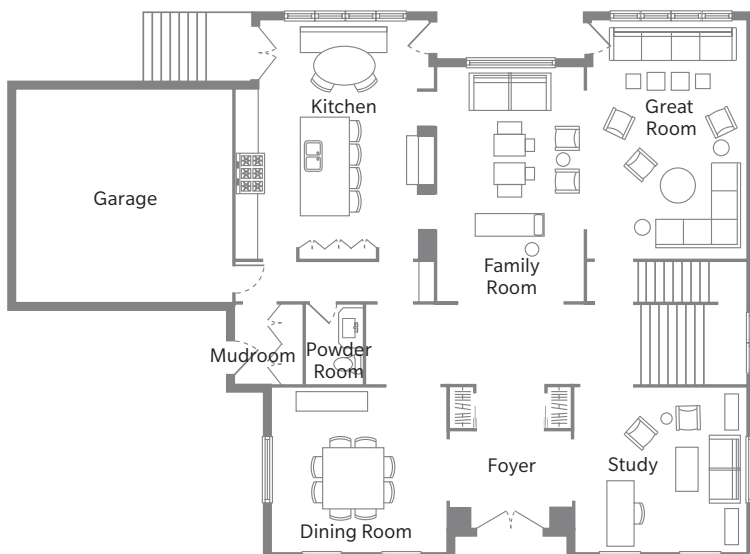
"I wanted the kitchen island to be a monolithic sculpture," says Brian. "We covered all sides of it in travertine — including the hidden dishwasher — and did a reverse bevel for the profile to make the counter appear like it's floating. Inserting the same material into the floor underneath the stools is another special detail."

Houses of this calibre needn't boast, but with fine finishes such as the fluted plaster walls reminiscent of special-occasion stemware and painstakingly inlaid tile floors seemingly plucked from a centuries-old castle, it's hard not to ogle a little. "The craftsmanship here is unbelievable," says Brian of the home, part of the lottery's annual grand prize, which includes the Oakville house, a Porsche and a hefty cash payout.

Brian is a designer who never shies away from playing with contrast, especially when the odds are in his favour. "I can't resist bright houses with a few dark rooms," he says of the saturated navy dining room and study just off the entry. Aside from the hue being Brian's favourite colour, blue is also the world's most popular hue — apropos when you're appealing to the thousands of people who buy tickets each year. "Everything looks effortless but, of course, it isn't," says Brian with a smile. No doubt, but for the lucky winner, making the most of this gracious home certainly will be. **H&H**



Main Floor





BELOW: For the powder room, Brian chose a metallic pleated wall covering and graphic panelling. **Vanity design,** Gluckstein Design Planning; **counter,** Cosentino; **wall covering,** Arte; **sconces,** Cocoon Furnishings.



ABOVE: “I love to read, so I can’t resist a library,” says Brian of the study, which features a coffered ceiling and handsome burlwood desk. **Ceiling fixture,** Universal Lighting; **wall covering,** Metro Wallcoverings; **étagères, sofa, armchairs,** GlucksteinHome; **desk,** Cocoon Furnishings; **rug,** Elte.
RIGHT: A second seating area gives the great room an intimate feel. “The pale blue upholstered screen draws you to the corner,” says Brian. **Upholstered wall, sectional,** Gluckstein Design Planning; **chair, tables,** GlucksteinHome.
OPPOSITE, TOP: Behind the travertine island is the kitchen’s impressive range wall, where a refrigerator and pantry are artfully hidden behind fluted glass. **Pendant,** Cocoon Furnishings; **cabinet design, stools,** Gluckstein Design Planning; **counters,** Silestone **backsplash,** Cosentino; **appliances,** JennAir; **faucet,** Grohe.
OPPOSITE, BOTTOM: Forever a fan of banquettes, Brian paired bench seating with a smoked glass trumpet table in the breakfast nook. The table ties in nicely with the kitchen’s black metal detailing. **Pendant,** Universal Lighting; **banquette,** Gluckstein Design Planning; **table, chairs,** GlucksteinHome.





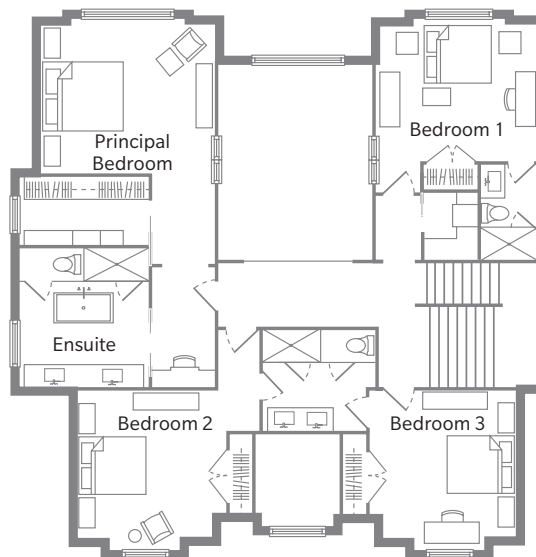
EVERYONE WILL BE
TALKING ABOUT

**THE POLISHED NICKEL
PRIVACY SCREEN**

"I wanted to do something different in the principal bathroom," says Brian. "Instead of using frosted glass for privacy, we installed a semitransparent screen to conceal the shower and water closet."

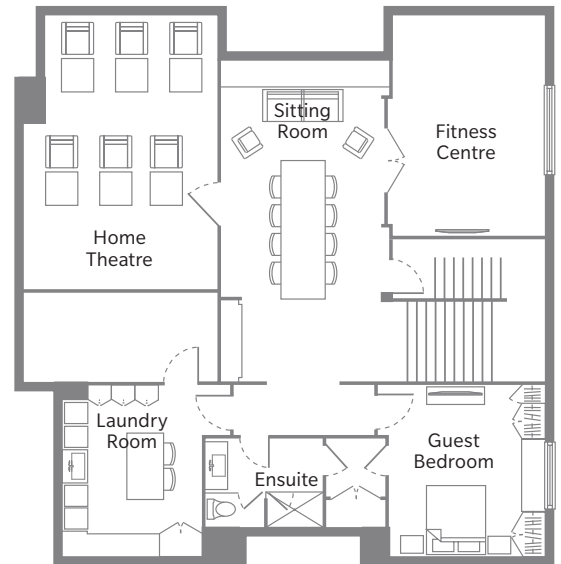


Second Floor





Basement



ABOVE: In the lower-level lounge area, a long table with seating and a built-in ice bucket are perfect for at-home wine tastings. **Table,** Gluckstein Design Planning; **stools,** Urban Barn; **wall and trim colour,** Pale Oak (OC-20), Benjamin Moore; **custom art** (right, above sofa, top and bottom), Gluckstein Design Planning with PI Fine Art.

RIGHT: The laundry room features two washer and dryer sets (one set shown), a built-in rod for line-drying and a centre island for folding that doubles as a wrapping station or craft area. **Cabinets,** PM Fine Cabinetry; **Dekton backsplash and counters,** Cosentino; **sink, DXV; faucet,** Grohe; **washer and dryer,** Whirlpool; **hardware,** Emtek; **flooring,** Stone Tile; **wall and trim colour,** Old Country (OC-76), Benjamin Moore.

OPPOSITE, TOP LEFT: In the principal bedroom, Brian chose a glamorous canopy bed — they're his favourite — and added custom cream upholstery that blends in to the wall. **Bed frame, bed linens, nightstands, table lamps,** GlucksteinHome; **wall colour,** Pale Oak (OC-20), Benjamin Moore.

OPPOSITE, TOP RIGHT: "I'm a real bath person, so the tub is always the centre point for me," says Brian of the enviable principal ensuite. **Flooring,** Dekton **shower walls,** Cosentino; **art** by Tash Damjanovic, Art Interiors; **wall colour,** Balboa Mist (OC-27), Benjamin Moore.

OPPOSITE, BOTTOM LEFT: The principal bathroom's cerused oak double vanity has polished nickel campaign-style handles and a durable honed porcelain counter. **Vanity design,** Gluckstein Design Planning; **vanity fabrication,** PM Fine Cabinetry; **counter,** Cosentino; **bathroom fixtures,** DXV; **sconces, pendant** (reflected in mirror), Universal Lighting.